

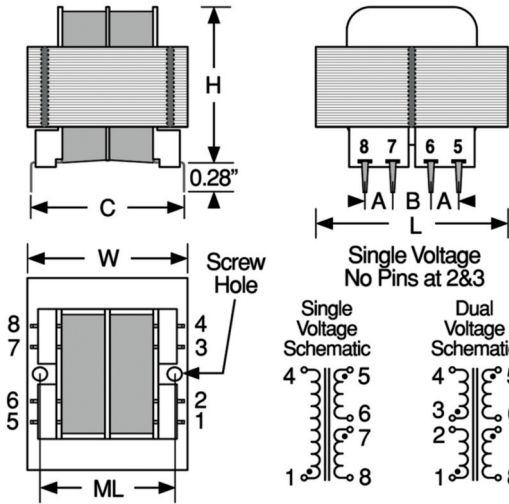
SERIES

6012R-6017R & 6022R-6027R
6012-6017 & 6022-6027

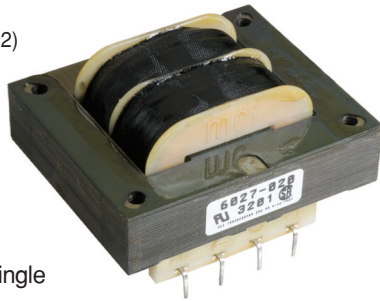
RoHS
Compliant

Traditional
First Quality

Horizontal PC Power Transformers



Actual Size (60x2)



UL Certified
 Recognized component
 Underwriters Labs, Inc.
 CSA Labeled

Primary Voltage
Series 6012 - 6017 115 Single
Series 6022 - 6027 115 -
 230 Dual

To Order For Single Voltage, insert numeral 1 for "x" in Part Number listed in tables; for Dual Voltage, insert numeral 2 for "x" in Part Number listed in tables.

Operating Frequency 50/60 Hz

Operating Temperature 130° C

2500 V RMS Hipot

Split bobbin non-concentric winding

Dots on schematic indicate like polarity

Note Series 6017 and 6027 – 4 mounting holes
 2³/₁₆ in. x 1³/₄ in. for #6 screw

*Complete part # must include series # PLUS the dash #

For surface finish information,
 refer to www.delevanfinishes.com

PART NUMBER	SECONDARY VOLTAGE SERIES CONNECTION		SECONDARY VOLTAGE PARALLEL CONNECTION		SECONDARY CURRENT SERIES CONNECTION		SECONDARY CURRENT PARALLEL CONNECTION	
	VA	VA	VA	VA	VA	VA	VA	VA
60x2-010	1.1	10.0	5.0	0.110	0.220			
60x2-012	1.1	12.6	6.3	0.090	0.180			
60x2-016	1.1	16.0	8.0	0.070	0.140			
60x2-020	1.1	20.0	10.0	0.055	0.110			
60x2-024	1.1	24.0	12.0	0.045	0.090			
60x2-028	1.1	28.0	14.0	0.040	0.080			
60x2-036	1.1	36.0	18.0	0.030	0.060			
60x2-048	1.1	48.0	24.0	0.023	0.046			
60x2-056	1.1	56.0	28.0	0.020	0.040			
60x2-120	1.1	120.	60.0	0.010	0.020			
60x3-010	2.4	10.0	5.0	0.250	0.500			
60x3-012	2.4	12.6	6.3	0.200	0.400			
60x3-016	2.4	16.0	8.0	0.150	0.300			
60x3-020	2.4	20.0	10.0	0.120	0.240			
60x3-024	2.4	24.0	12.0	0.100	0.200			
60x3-028	2.4	28.0	14.0	0.085	0.170			
60x3-036	2.4	36.0	18.0	0.065	0.130			
60x3-048	2.4	48.0	24.0	0.050	0.100			
60x3-056	2.4	56.0	28.0	0.045	0.090			
60x3-120	2.4	120.	60.0	0.020	0.040			
60x4-010	6.0	10.0	5.0	0.600	1.200			
60x4-012	6.0	12.6	6.3	0.500	1.000			
60x4-016	6.0	16.0	8.0	0.400	0.800			
60x4-020	6.0	20.0	10.0	0.300	0.600			
60x4-024	6.0	24.0	12.0	0.250	0.500			
60x4-028	6.0	28.0	14.0	0.200	0.400			
60x4-036	6.0	36.0	18.0	0.170	0.340			
60x4-048	6.0	48.0	24.0	0.125	0.250			
60x4-056	6.0	56.0	28.0	0.110	0.220			
60x4-120	6.0	120.	60.0	0.050	0.100			
60x5-010	12.	10.0	5.0	1.200	2.400			
60x5-012	12.	12.6	6.3	1.000	2.000			
60x5-016	12.	16.0	8.0	0.800	1.600			
60x5-020	12.	20.0	10.0	0.600	1.200			
60x5-024	12.	24.0	12.0	0.500	1.000			
60x5-028	12.	28.0	14.0	0.420	0.840			
60x5-036	12.	36.0	18.0	0.350	0.700			
60x5-048	12.	48.0	24.0	0.250	0.500			
60x5-056	12.	56.0	28.0	0.220	0.440			
60x5-120	12.	120.	60.0	0.100	0.200			
60x6-010	20.	10.0	5.0	2.000	4.000			
60x6-012	20.	12.6	6.3	1.600	3.200			
60x6-016	20.	16.0	8.0	1.250	2.500			
60x6-020	20.	20.0	10.0	1.000	2.000			
60x6-024	20.	24.0	12.0	0.800	1.600			
60x6-028	20.	28.0	14.0	0.700	1.400			
60x6-036	20.	36.0	18.0	0.550	1.100			
60x6-048	20.	48.0	24.0	0.400	0.800			
60x6-056	20.	56.0	28.0	0.350	0.700			
60x6-120	20.	120.	60.0	0.160	0.320			
60x7-010	36.	10.0	5.0	3.600	7.200			
60x7-012	36.	12.6	6.3	2.850	5.700			
60x7-016	36.	16.0	8.0	2.250	4.500			
60x7-020	36.	20.0	10.0	1.800	3.600			
60x7-024	36.	24.0	12.0	1.500	3.000			
60x7-028	36.	28.0	14.0	1.300	2.600			
60x7-036	36.	36.0	18.0	1.000	2.000			
60x7-048	36.	48.0	24.0	0.750	1.500			
60x7-056	36.	56.0	28.0	0.650	1.300			
60x7-120	36.	120.	60.0	0.300	0.600			

Physical Parameters & Mounting Information

	L		W		H		A		B		C		ML		Screw Size	Weight	
	in.	mm	in.	mm	in.	mm	in.	mm	in.	mm	in.	mm	in.	mm		lbs.	grams
60x2	1.38	34.93	1.13	28.58	0.94	23.81	0.25	6.35	0.25	6.35	1.20	30.48	—	—	none	0.17	77
60x3	1.38	34.93	1.13	28.58	1.19	30.16	0.25	6.35	0.25	6.35	1.20	30.48	—	—	none	0.25	113
60x4	1.63	41.28	1.31	33.34	1.31	33.34	0.25	6.35	0.35	8.89	1.28	32.51	1.06	26.99	4-40	0.44	200
60x5	1.88	47.63	1.56	39.69	1.44	36.51	0.30	7.62	0.40	10.16	1.41	35.81	1.25	31.75	4-40	0.70	317
60x6	2.25	57.15	1.88	47.63	1.44	36.51	0.30	7.62	0.40	10.16	1.60	40.64	1.50	38.10	4-40	0.80	363
60x7	2.63	66.68	2.19	55.56	1.56	39.69	0.40	10.16	0.40	10.16	1.85	46.99	—	See Note	—	1.10	499